

ELECTRONIC IGNITION
FITTED CLOCK AS STANDARD
ANTI-SCALE SYSTEM
CONTINUOUS MODULATION
AUTOMATIC BY-PASS FITTED
HIGH DOMESTIC HOT WATER FLOW RATE
LPG KITS AVAILABLE



BIASI
U.K. LIMITED

PRISMA_s

WALL-HUNG GAS FIRED COMBINATION AND
SEALED SYSTEM BOILERS

24SER - 24SE - 28SE



Outputs from 24 kW (81,900 btu/h) to 28 kW (95,550 btu/h)

CE
0063

**BRITISH GAS
SERVICE LISTED**



PRISMA

Biasi Prisma boilers have evolved from previously successful Biasi products. Prisma's have an elegant white gloss casing which compliments any kitchen decor.

Installation is made simple with a time clock fitted as standard (excluding SER model) and flue kits for a multitude of applications.

For the User the control panel is simple and easy to understand.

Electronic ignition and modulation ensures reliability and effective performance on demand.

PRISMA "S"

The main characteristic of the Prisma "S" boilers is the sealed combustion chamber which allows high efficiencies to be maintained.

Air for combustion is provided through a balanced flue system and flue gases are expelled via an integral fan unit.

SER Model: fanned flue, room sealed, electronic ignition (without pilot flame), for conventional sealed system central heating and D.H.W. applications.

SE Model: fanned flue, room sealed, electronic ignition (without pilot flame), central heating and domestic hot water (combination boiler).

Main advantages

- High efficiency wall hung boiler.
- Immunity against radio disturbances.
- High efficiency main exchanger.
- Immediate delivery of hot water.
- Anti-scale system.
- Temperature modulation within $\pm 1^\circ\text{C}$.
- Safety flow switch.
- Easy conversion to different gasses.
- Easy maintenance.

Radio disturbances immunity.

The electronic p.c.b. is equipped with devices that protect the operation of the boiler from radio frequencies.

High efficiency main exchanger.

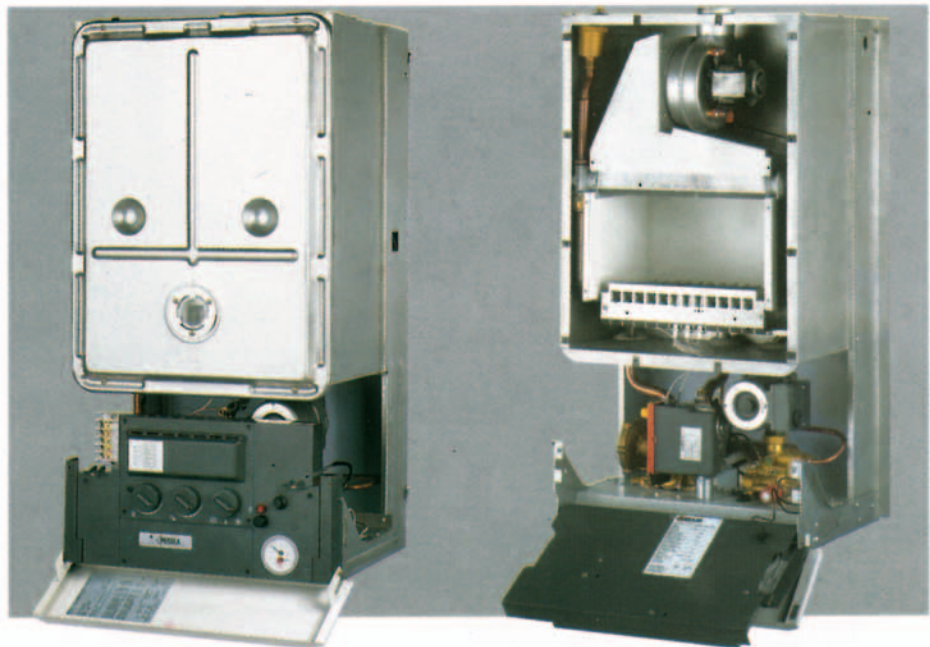
Copper exchanger with oval pipe to provide better thermal exchange.

Anti-scale system.

The D.H.W. exchanger (not in the SER model) is protected against the build up of lime scale by temperature regulation. Temperatures within the critical zone main circuit are kept below 75°C in order to restrict the formulation of scale.

Temperature fluctuation ($\pm 1^\circ\text{C}$)

The gas valve is continuously modulating when operating in both central heating and hot water (excluding SER model) modes. The central heating output on all Prisma boilers can be adjusted during commissioning to match the heating requirements. In this way the temperature fluctuation is always within $\pm 1^\circ\text{C}$.



Safety flow switch.

This is a device which is positioned on the main circuit to monitor the flow and protect the main heat exchanger from thermal shock in the event that the system lacks water.

Easy gas conversion.

Conversion of the boiler to suit different gases is achieved by changing the injectors and making a simple adjustment to the electronic p.c.b.

Easy maintenance.

Prisma boilers have been manufactured to allow easy access to all the main components thereby reducing servicing time and cost.

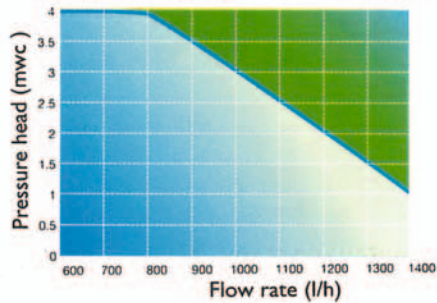
Technical characteristics

- Copper main exchanger with oval pipes
- INOX steel plate D.H.W. exchanger (*)
- Continuous modulation
- Electronic ignition
- Hydraulic diverter valve (*)
- Circulation pump (see graph n. 1)
- Automatic by-pass
- D.H.W. flow limiter (optional extra)
- D.H.W. inlet filter
- Drainage valve
- Main circuit safety flow switch
- White gloss finish case
- Range rated to suit heating requirements
- Built in time clock (*)

(*) SE models only

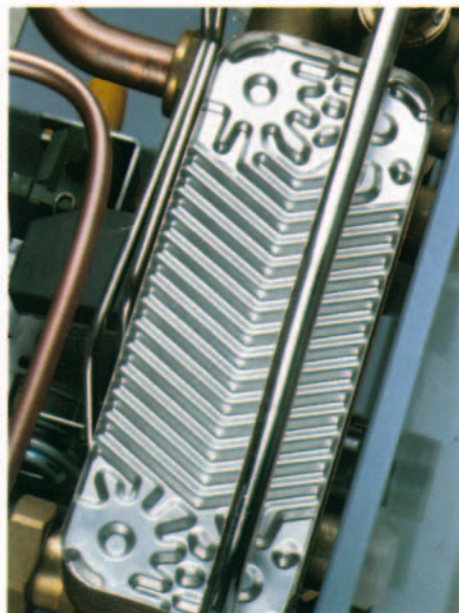
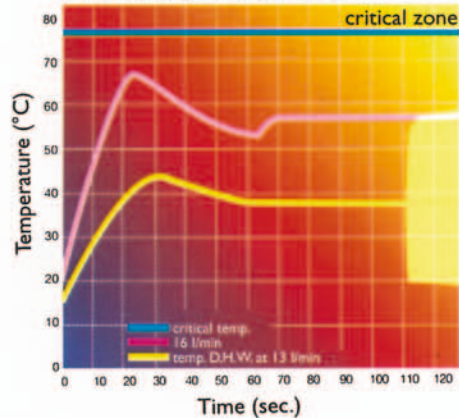
Net pressure head

Graph 1



Temperatures with anti scale system ($\Delta t=25^\circ$)

Graph 2



Domestic Hot Water delivery.
The INOX steel D.H.W. plate exchanger is easy to clean and delivers hot water quickly.

Technical data

Central Heating

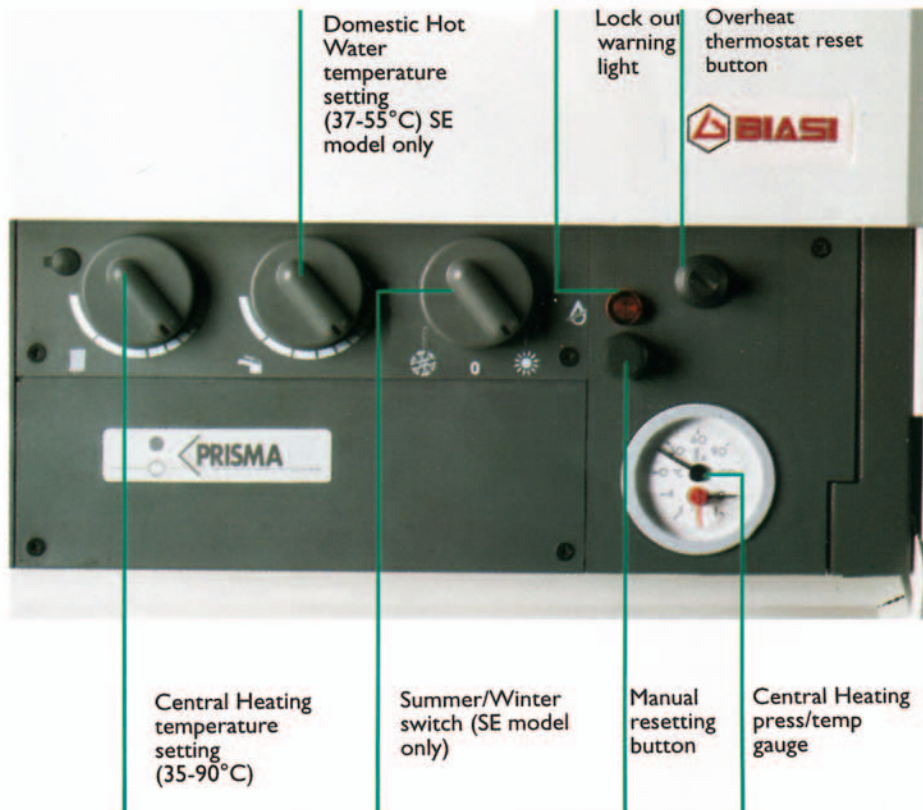
		24 SE R	24 SE	28 SE
Heat Output	kW	24	24	28
	Btu/h	81,900	81,900	95,550
Heat Input	kW	26.6	26.6	31.1
	Btu/h	90,750	90,750	106,100
Minimum Heat Output	kW	9,3	9,3	11
	Btu/h	31,730	31,730	37,530
Efficiency 100% load	%	90	90	90
Efficiency 30% load	%	87	87	87
Temperature setting Range	$^\circ\text{C}$	35/90	35/90	35/90
Expansion Vessel capacity	l.	8	8	8
Maximum working pressure	bar	3	3	3
Pressure Head	bar	0.35	0.35	0.35
	m. w.c.	3.5	3.5	3.5

Domestic Hot Water

Heat Output	kW	24	28
	Btu/h	81,900	95,550
Heat Input	kW	26.6	31.1
	Btu/h	90,750	106,100
Temperature setting Range	$^\circ\text{C}$	35/55	35/55
Working Pressure max.	bar	10	10
	min	0,3	0,3
Flow Rate ($\Delta t=25^\circ\text{K}$)	l/min	13.7	16
Flow Rate ($\Delta t=35^\circ\text{K}$)	l/min	9.8	11.5

Other data

Voltage/Frequency	V/Hz	230/50	230/50	230/50
Power	W	150	150	170
Height	mm	800	800	800
Width	mm	450	450	500
Depth	mm	350	350	350
Weight	kg	41	45	48
Inlet/Outlet connections	"	3/4	3/4	3/4
Gas inlet connection	"	3/4	3/4	3/4
D.H.W. Inlet/Outlet connection	"	1/2	1/2	1/2
\varnothing flue pipe	mm	60/100	60/100	60/100
Maximum horizontal length of flue pipe	m	2.65	2.65	2.65



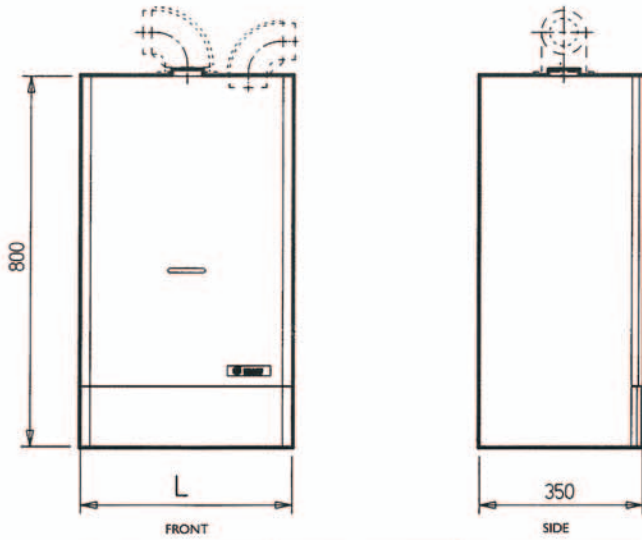
Central Heating temperature setting (35-90 $^\circ\text{C}$)

Summer/Winter switch (SE model only)

Manual resetting button

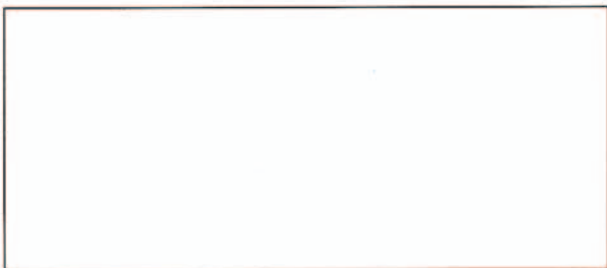
Central Heating press/temp gauge

Dimensions PRISMA S



MODEL	24SER/24SE	28SE
L	450	500

Dimensions shown in millimeters



Biasi is in its constant pursuit of product excellence, the manufacturer reserves the right to alter the information provided in this brochure at any time and without notice. This brochure is intended as an informative aid cannot be construed as a contract.



Biasi House
 Unit 31/33, Planetary Road Industrial Estate,
 Neachells Lane,
 Willenhall, Wolverhampton WV13 3XB
 Tel: 01902 304304 (Sales)
 Tel: 01902 304400 (Service)
 Fax: 01902 304321